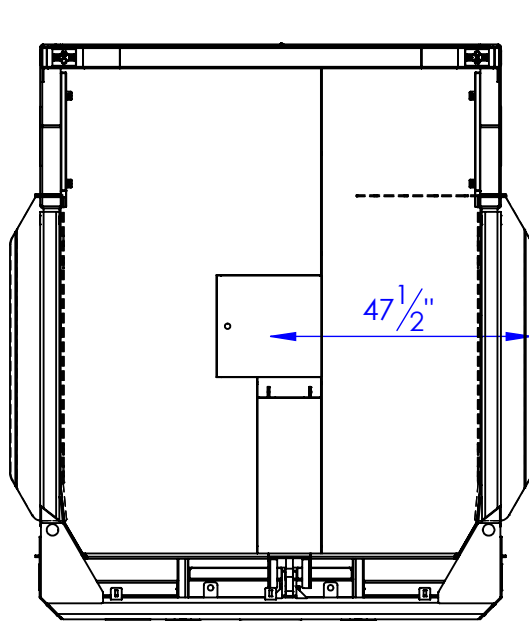


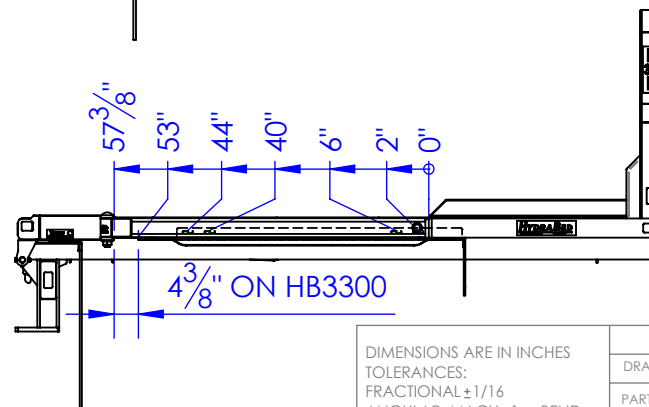
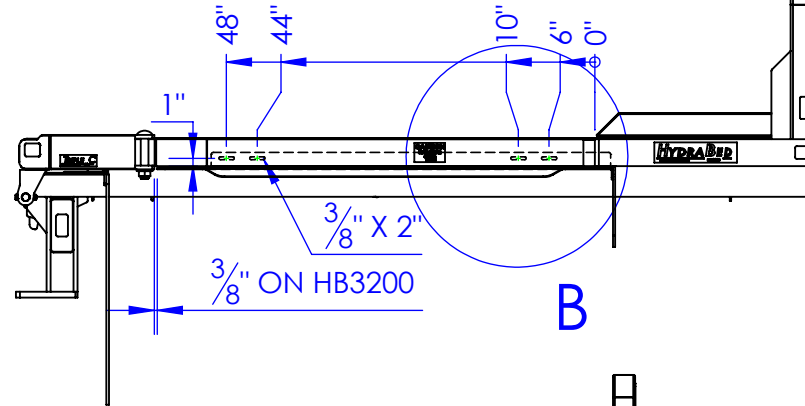
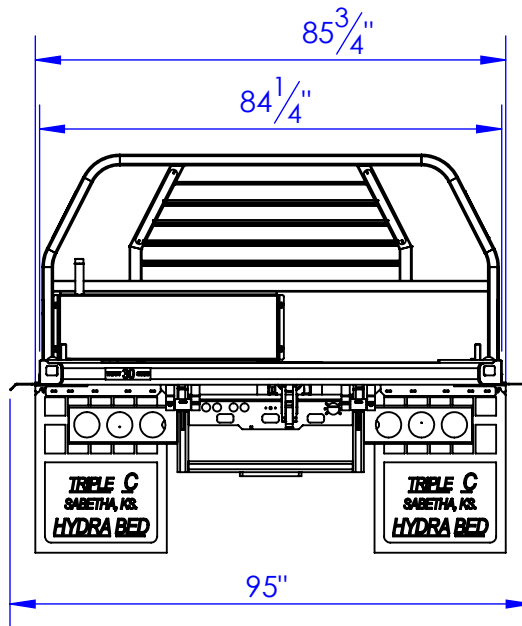
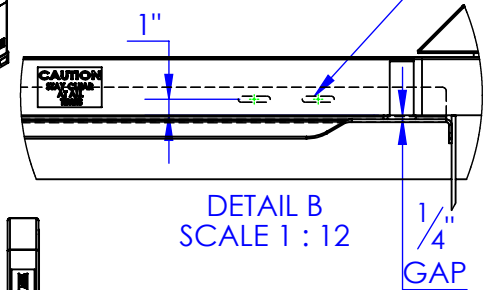
REV.	REVISIONS	DESCRIPTION	DATE	APPROVED
A		INITIAL RELEASE	7/24/2014	



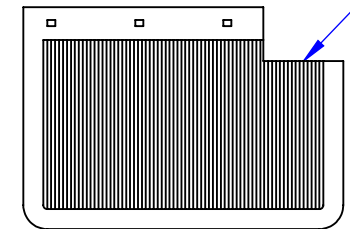
HB-3200

HB-3300

DRILL FOUR 3/8" HOLES &
MOUNT FLARE WITH FOUR
3/8x1 BOLTS PER SIDE



NOTCH FRONT
MUDFLAP TO MATCH
& DRILL NEW HOLES



P.O. BOX 248,
SABETHA, KS 66534

TRIPLE C
INC.

DIMENSIONS ARE IN INCHES
TOLERANCES:
FRACTIONAL $\pm 1/16$
ANGULAR: MACH ± 1 BEND \pm
TWO PLACE DECIMAL ± 0.10
THREE PLACE DECIMAL ± 0.005

NAME	DATE
DRAWN HEATH	7/24/2014
PART #	
ASM #	OP-FL-395

COMMENTS:

HB3200 &
HB3300 FENDER
FLARE 95"

PROPRIETARY AND CONFIDENTIAL
THE INFORMATION CONTAINED IN THIS
DRAWING IS THE SOLE PROPERTY OF TRIPLE
C INC. ANY REPRODUCTION IN PART OR
AS A WHOLE WITHOUT THE WRITTEN
PERMISSION OF TRIPLE C INC. IS PROHIBITED.

MATERIAL ---
DO NOT SCALE DRAWING

SIZE A	DWG. NO. 90-0211	REV. A
SCALE: 1:35	WEIGHT: ---	SHEET 1 OF 1